

# Legamaster

We make communication visible



**COLLABORATE INTO A BRIGHTER FUTURE**

EVOLVE touch displays

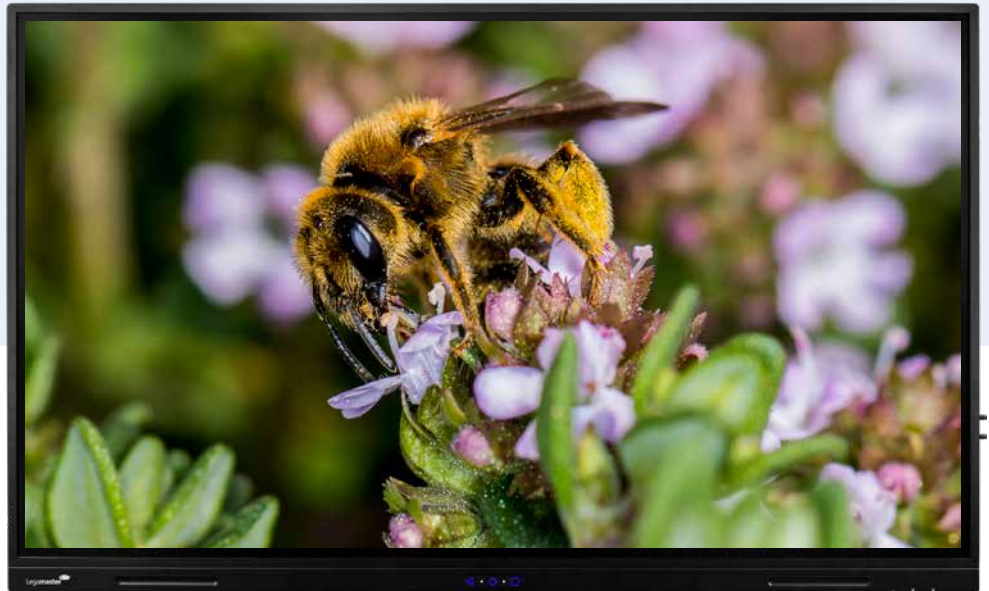


The energy saving champion

# For sustainable knowledge transfer



With the new EVOLVE series, we present our most advanced and at the same time most sustainable generation of touch displays. Nature shows us how - sustainable and vital collaborations like the bee that pollinates the blossoms of an apple tree and contributes to our harvest of food that our children get to eat and thus grow up healthy.



To impressively illustrate the knowledge of this natural interaction, which takes place in countless versions every day on earth, to the next generation is essential for an emotional understanding. To clarify and convey the fragile interrelationships to the young generation is a demand that school creates and thus activates young people to focus on the protection of nature. In this way, the understanding conveyed to the young generation at school influences all of our chances for a good future. With the new EVOLVE touch displays, this succeeds sustainably in two respects.

# TOUCHDISPLAYS – THE NEXT GENERATION



1%

FOR THE  
PLANET



## Green certifications

Being a responsible partner and truly caring for the environment is part of the Legamaster DNA. As a brand leader, we are fully aware of our environmental responsibility. Additionally, we understand how important Chain of Custody and the right quality systems and certifications are for many of our valued customers. Our long-term environmental engagement is confirmed by the successful certification as being compliant with the standards of:

- FSC®
- PEFC™
- EU Ecolabel
- ISO 14001:2015



# Yesterday already thinking about tomorrow ...

## Sustainable by tradition

Environmental protection and sustainable action have been firmly anchored in the corporate DNA of Legamaster and the edding Group since the company was founded, in order to give future generations the chance of a good future.


As early as 1960, the edding founders, Carl-Wilhelm Edding and Volker Detlef Ledermann, committed themselves to sustainability. A commitment that is still carried on by the Ledermann family today. It was only logical and consistent that Legamaster, as a subsidiary, should focus on sustainability when developing the latest display series. We are thus taking the decisive step: „1% for the planet“ is not just a statement, we live it in our corporate heritage and translate it into our product range.



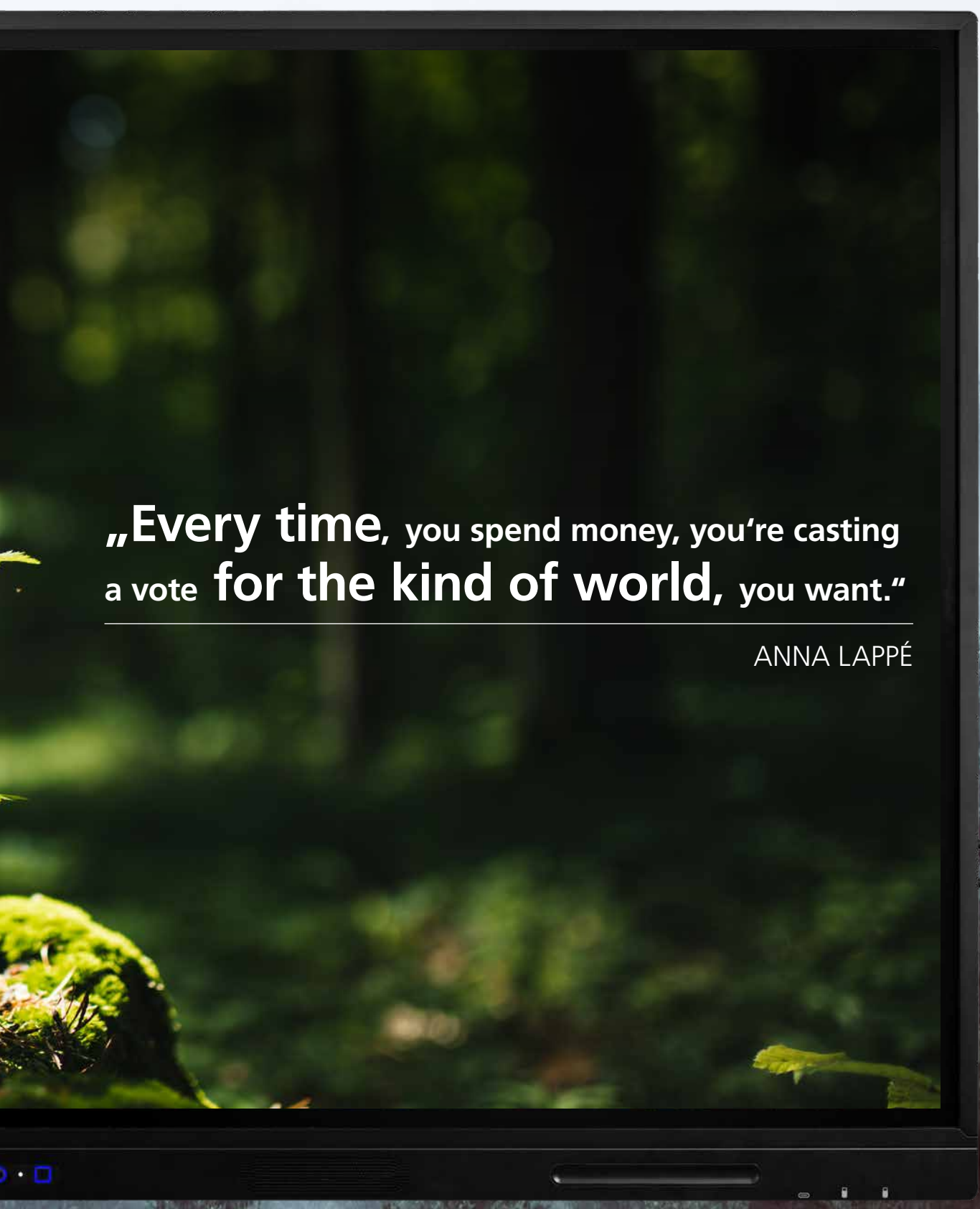
# EVOLVE

1%

FOR THE  
PLANET

Legamaster 



A large monitor is the central focus, displaying a quote by Anna Lappé. The background of the monitor is a lush green forest scene with sunlight filtering through the trees. The quote is written in white text on a dark background. The monitor's bezel is visible, and the background of the entire page is a misty forest scene.

**„Every time, you spend money, you’re casting a vote for the kind of world, you want.“**

ANNA LAPPÉ

## Doing good with EVOLVE and 1% for the Planet

A very special feature of EVOLVE displays is the 1% for the Planet certification. As part of this certification, we donate 1% of EVOLVE sales to the 1% for the Planet Foundation to support sustainability and environmental projects worldwide.





- 50,000 hours lifespan
- No wearing out of the touch surface
- Energy saving champion
- Intuitive and collaborative

- Future-proof thanks to Android 11 operating system with OTA updates
- comprehensive warranty
- Extensive additional equipment



# EVOLVE combines quality advantage with sustainability



## This makes learning twice as fun

As with our previous devices, we attach great importance to the fact that the devices of the EVOLVE series can be operated intuitively for uncomplicated everyday use. This is how we make contemporary collaboration very simple and uncomplicated. After switching on, permanently displayed buttons give you access to important settings and tools at any time and from any application. Three additional buttons on the frame complete the operating concept.

The EVOLVE displays can also be used without a connected computer thanks to the integrated Android 11 operating system, which can be completely or partially deactivated if required. Peripheral devices can be conveniently connec-

ted via USB-C and can also be charged directly thanks to 100W power output.

A highlight to save energy in an uncomplicated way is the optionally available proximity sensor, which switches the EVOLVE on when there is movement in the room and switches it back to sleep mode as soon as no movement is detected for a longer period of time. This is a very simple way to save additional energy.



# Everything in harmony – your personal equipment

Durable components, 50,000 hours  
Lifetime, comprehensive warranty

Etched glass surface  
does not wear out

Low power consumption, cheaper  
cheaper compared to projector



1% for the Planet



## Upgrading EVOLVE individually

With additional accessories, the units of the EVOLVE series can be further upgraded to a solution. These include various (height-adjustable) mounting solutions, OPS computers and the new easyview 4K camera, with integrated microphones and autoframing function, which is simply attached to the display frame.

The optional proximity sensor, which switches the units on when there is movement in the room and puts them back into sleep mode as soon as no movement is detected for a longer period of time, is an easy way to save additional energy.

And the new NFC reader, available as an accessory, ensures that no one has unauthorised access to the display. Content from a smartphone, tablet or laptop can be easily streamed to the display via AirServer

Sustainability was also a concern for us when it came to the scope of delivery of the EVOLVE displays. That's why we deliver the displays exclusively with a mains cable and do not include other cables that often lie around unused or are disposed of. Instead, individual cables for connecting and operating the displays can now be purchased from us if required.





## Durable and resource-saving

When things are easy, in meetings, online meetings and presentations, technology delivers reliably. Like the EVOLVE, where all components are carefully selected and designed for long-term use in schools and offices. These include, for example, panels with a 50,000-hour service life or the touch surface made of etched safety glass, whose reflection-reducing properties do not wear out even with intensive use.

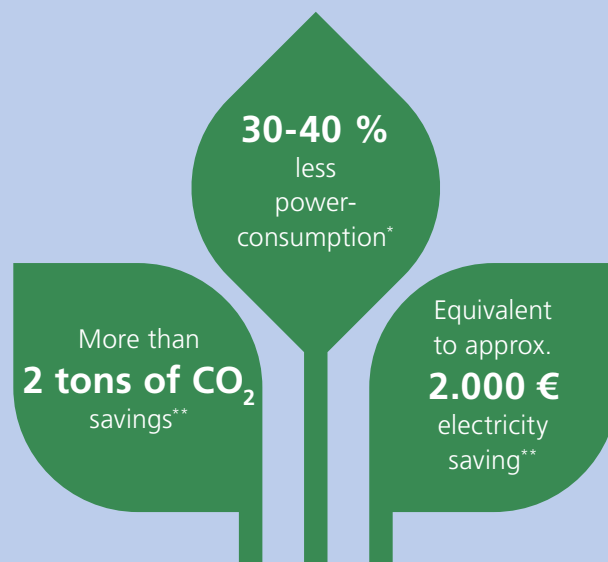
The Android 11 operating system, which can be kept up to date via OTA updates, is currently the most future-proof system and, together with the comprehensive warranty, the EVOLVE touch displays offer a durable and reliable collaboration solution. An extensive range of additional equipment provides you with individual solutions that master every everyday challenge.



# EVOLVE – the likeable new colleague with added value

## The energy saving champion

The units from the EVOLVE series achieve impressive values when it comes to energy efficiency. While the power consumption of the predecessors from the ETX series was already low, we were able to correct this even lower with EVOLVE, so that the units consume on average 30 - 40% less power than comparable products on the market. This means that over the lifetime of an EVOLVE display, approximately 2,000 euros in electricity costs and more than 2 tonnes of CO<sub>2</sub> can be saved - as much as 160 large trees can bind annually.

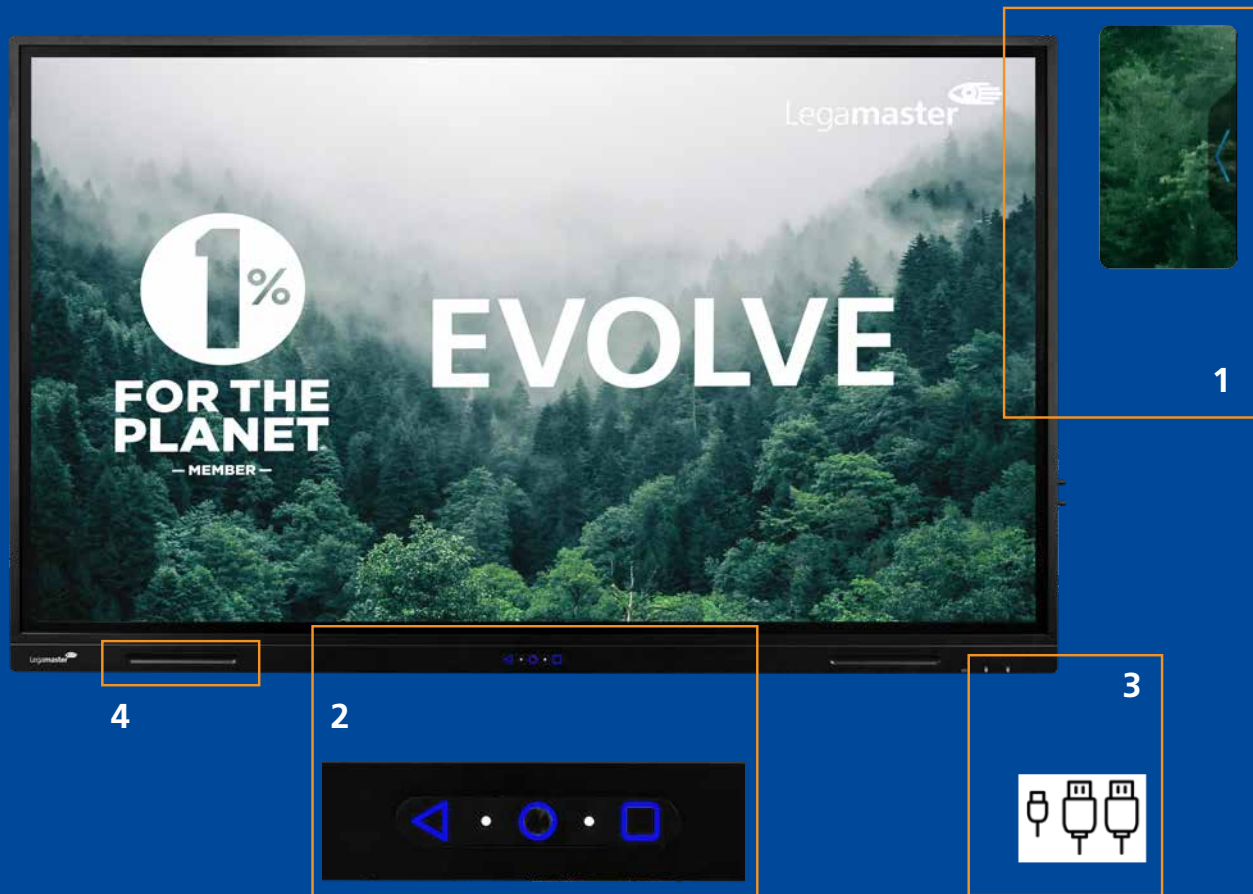


\*than comparable products on the market \*\*over the lifespan of at least 50,000 hours

# If only everything was that simple – EVOLVE

## Intuitive and easy to handle

We are committed to nature and especially to the user. The new generation of our touch displays is even more intuitive and, with numerous features and a comprehensive range of extensions, the ideal collaboration partner.



1. Both sides have Quick access menu arrows, by clicking them you will instantly have access to some useful tools and settings..
2. Three buttons can be found in the bottom center of the screen's bezel:
  - Back button: By only tapping on this button, you will go one step backwards on your menu or option. Holding this button for one second will open the inputs menu.
  - Home button: By only tapping on this button, you will go directly to the screens home menu. Holding this button for two seconds will prompt the screen to shutdown..
  - Square button: By only Tapping on this button, you will open the recent apps you used. Holding this button will open the quick access menu.
3. Easy Connections: some easy to go connections are available on the bottom right corner, this include a USB-C and 2 USB-A 3.0 connectors.
4. Pen Holders: the penholders will let you have an easy access to the screen's stylus



## The complete package

- Object recognition
- Passive pen
- Touch-OSD
- Slim bezel design
- Front Facing Speakers
- Integrated Subwoofer
- Integrated penholders



## Glass & Panel

- Brightness: 450 cd/m<sup>2</sup>
- Contrast (static): 5000:1
- 18/7 Durability
- 178/178 View angle
- 50000hrs Lifespan
- Zero Gap Bonding
- Etched Glass
- Superb image quality



## OS & Connectivity

- Android 11
- Octa Core processor
- RAM: 8 GB
- Internal storage: 64GB
- Wi-Fi 6
- 1 x HDMI 2.1 In/  
1 x HDMI 2.1 Out
- USB-C (1) 100 W &  
USB-C (2) 15 W

Umfangreiches Ausstattungs- und Zubehörsortiment für einfache Integration



AirServer



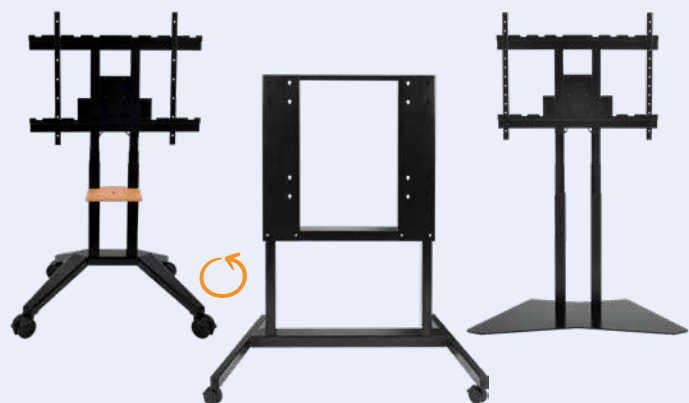
EASY VIEW camera 4K ePTZ



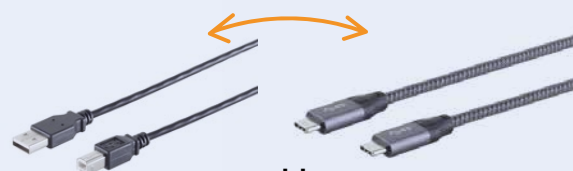
proximity sensor



NFC reader



Mounting solutions



cable



86"

75"

65"

55"

Legamaster 

Legamaster International B.V.

Kwinkweerd 62


P.O. box 111

7240 AC Lochem

The Netherlands

Tel.: (+31) (0)573 - 71 30 00

E-Mail : info@legamaster.com

 Legamaster

Legamaster, brand  
of the edding group 